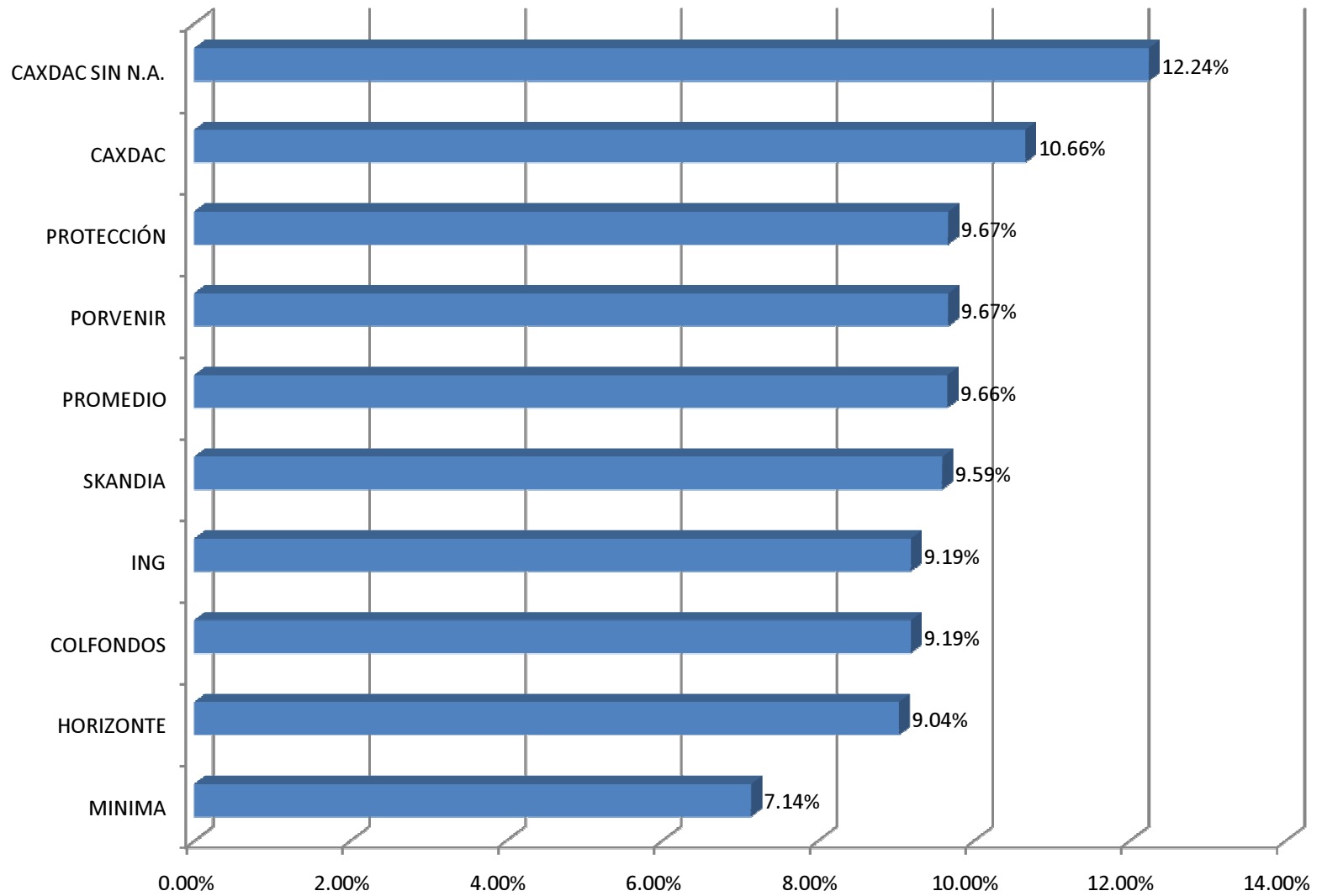


RENTABILIDAD 3 AÑOS MARZO/08



COMPOSICION FONDO (VEJEZ, INVALIDEZ Y SOBREVIVIENTES)

CALIFICACION EMISORES A 31 DE MARZO DE 2008

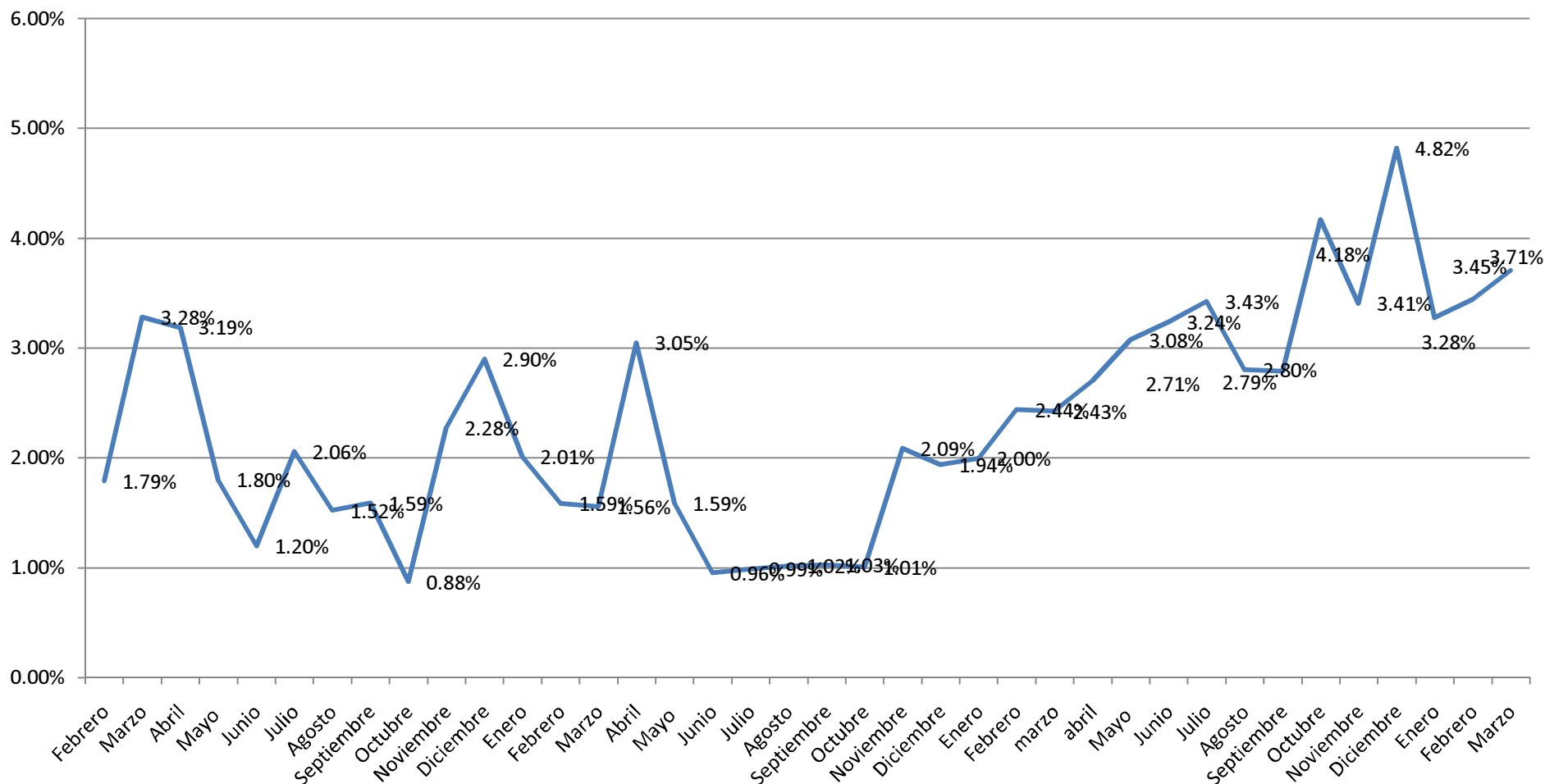
CALIF.	EMISOR	VR. MERCADO	PART.	CALIFIC.	%	
NACION	TES/BONOS DE PAZ	33,561,265,132	10.41%		38.97%	
	DEUDA EXTERNA	91,112,911,329	28.25%			
	FOGAFIN	1,009,280,732	0.31%			
AAA	ORGANISMOS PUBLICOS				44.17%	
	DISTRITO CAPITAL	11,010,023,231.00	3.41%	DCR		
	DPTO. C/MARCA	872,672,486.00	0.27%	DCR		
	GRUPO ISA	10,835,124,177.00	3.36%	DCR		
	GRUPO EPM	1,090,378,028.00	0.34%	DCR		
	TITULARIZACIONES					
	FID. NOTAS TRANSGAS	976,875,581.00	0.30%	DCR		
	FID. NOTAS CODAD	1,977,345,738.00	0.61%	BRC		
	FIDEICOMISO INCAUCA	2,873,958,073.00	0.89%	DCR		
	FID. CORREDOR V. CTG	2,651,009,620.00	0.82%	DCR		
	COLSANITAS	3,464,216,236.00	1.07%	DCR		
	TAYRONA	1,102,026,654.00	0.34%	DCR		
	SECTOR FINANCIERO					
	BANCOLOMBIA	4,923,496,329.00	1.53%	DCR		
	ABN AMRO BANK	3,091,794,611.00	0.96%	DCR		
	BBVA	7,980,975,466.00	2.47%	DCR		
	GMAC	2,055,016,546.00	0.64%	DCR		
	BANCO DE BOGOTA	893,396,910.00	0.28%	DCR		
	GRUPO AVAL	2,025,328,923.00	1.14%	DCR		
	CITIBANK	1,492,596,737.00	0.46%	DCR		
	LEASING DE OCCIDENTE	1,502,561,459.00	0.47%	DCR		
	FINANDINA	2,005,575,723.00	0.62%	DCR		
	BANCO DE OCCIDENTE	2,560,474,475.00	0.79%	DCR		
	BANCOLDEX	7,154,821,333.00	2.22%	DCR		
	FINDETER	7,070,515,726.00	2.19%	DCR		
	ENCARGOS FIDUCIARIOS					
	FIDUCOLOMBIA	3,518,537.00	0.00%	DCR		
	FIDUCOR	502,483,558.00	0.16%	DCR		
	CORFICOLOMBIANA	390,043,500.00	0.12%	DCR		
	HELM TRUST	12,725,910.00	0.00%	DCR		
	ACCIONES					
	ISA	6,124,021,788.00	1.90%	DCR		
	ISAGEN	14,387,480,400.00	4.46%	DCR		
	GRUPO AVAL	3,663,727,361.00	1.14%	DCR		
	ETB	1,075,491,758.00	0.33%	DCR		
	ECOPETROL	10,415,331,903.00	3.23%	DCR		
	ALMACENES ÉXITO	1,156,789,179.00	0.36%	DCR		
	SECTOR REAL -PRIVADO					
	CEMENTOS ARGOS	3,730,584,481.00	1.16%	DCR		
	BAVARIA	3,610,482,765.00	1.12%	DCR		
	CUSA	605,117,411.00	0.19%	DCR		
	COMCEL	1,069,971,243.00	0.33%	DCR		
	METRODISTRITO	1,577,492,401.00	0.49%	DCR		
	COVIANDES	2,028,451,225.00	0.63%	DCR		
FIDUCIA AV SUBA TRAMO II	1,509,842,137.00	0.47%	DCR			
EMGESA	6,047,289,091.00	1.87%	DCR			
PROMIGAS	1,390,405,019.00	0.43%	DCR			
OTROS						
BANCO MUNDIAL, IFC	1,691,919,452.00	0.52%	DCR			
EFFECTIVO						
CORFICOLOMBIANA	231,901,916.00	0.07%	DCR			

COMPOSICION FONDO (VEJEZ, INVALIDEZ Y SOBREVIVIENTES)

CALIFICACION EMISORES A 31 DE MARZO DE 2008

CALIF.	EMISOR	VR. MERCADO	PART.	CALIFIC.	%		
AA	SECTOR FINANCIERO				6.19%		
	BANCO COLPATRIA	851,273,955.00	0.26%	DCR			
	LEASING COLOMBIA	4,005,426,856.00	1.24%	DCR			
	SECTOR REAL						
	BANCO MUNDIAL DE LA MUJER	3,345,240,609.00	1.04%	DCR			
	REITS	2,366,955,876.00	0.73%	DCR			
	CORONA	2,162,035,344.00	0.67%	DCR			
	CARACOL TV	89,805,583.00	0.03%	DCR			
	SURENTING	4,501,858,757.00	1.40%	DCR			
	SECTOR FINANCIERO						
	SUFINANCIAMIENTO	2,653,529,348.00	0.82%	DCR			
	AA	SECTOR FINANCIERO					1.70%
	COLTEFINANCIERA	1,019,961,197.00	0.32%	DCR			
	ENTIDADES EXTERIOR						
	UBS	2,743,145,027.00	0.85%	S&P			
	BARCLAYS BANK -AVANS	1,733,223,521.00	0.54%	S&P			
	AA-	ENTIDADES EXTERIOR					0.93%
	CITIGROUP	2,989,890,947.00	0.93%	S&P			
	A+	ENTIDADES EXTERIOR					2.75%
SANTANDER PRIVATE BANKING	8,882,121,325.00	2.75%	S&P				
A	MULTILATERALES				0.29%		
CORP. ANDINA DE FOMENTO	950,846,947.00	0.29%	S&P				
SIN CALIFICACION	TITULARIZACION INMOBILIARIA				4.14%		
	TITULOS TREN	7,423,094.00	0.00%				
	ACCIONES-FONDOS INTERNACIONALES ACC						
	CLINICA COLSANITAS	314,091,408.00	0.10%				
	INVERARGOS	1,603,537,200.00	0.50%				
	CITIFUND LIQUIDITY	6,582,746,219.00	2.04%				
	FLF BEST SELEC	284,907,087.00	0.09%				
	FLF EQUITY ASIA	360,151,074.00	0.11%				
	FLF SMALL CAPS	129,564,361.00	0.04%				
	FORTIS EQUITY	675,118,848.00	0.21%				
	FRANKLIN OPPORT	71,074,515.00	0.02%				
	FRANKLIN U S EQUITY	1,393,423,717.00	0.43%				
	FRANKLIN US SMALL	70,749,554.00	0.02%				
	TEMPLETON EAST A	105,463,984.00	0.03%				
	TEMPLETON L.A.	109,593,495.00	0.03%				
FONDO VALORES BANCOLOMBIA	1,649,345,903.00	0.51%					
TOTAL		318,171,218,041					

Valor en Riesgo Marzo de 2008

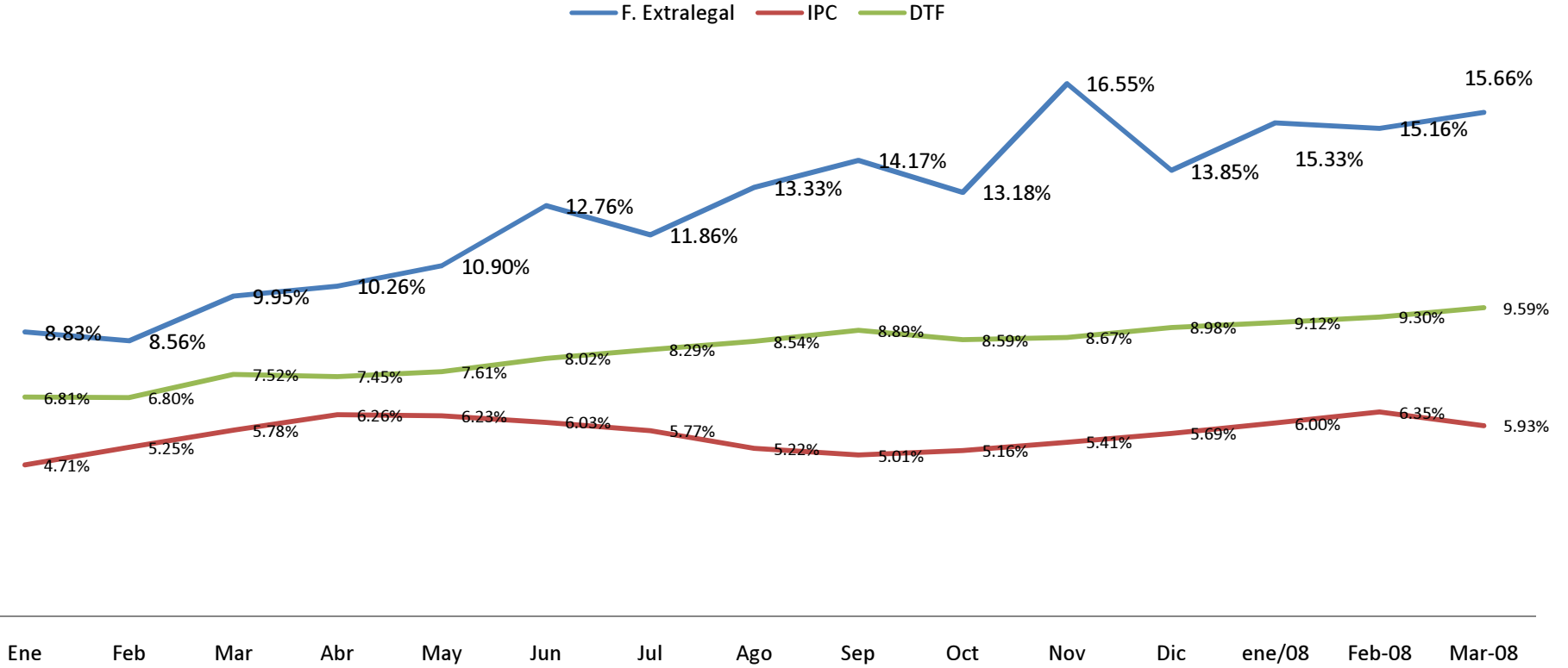


FONDO	VALOR EN RIESGO	VALOR PORTAFOLIO	Ver/ Vr. Portafolio
VEJEZ	11,489,426,369	303,052,653,664	3.79%
INVALIDEZ	227,309,176	9,741,263,295	2.33%
SOBREVIVIENTES	233,174,550	9,753,106,786	2.39%
EXTRALEGAL	200,259,706	6,005,097,599	3.33%
ADMINISTRADORA	52,082,289	496,832,294	10.48%
TOTAL	12,202,252,090	329,048,953,638	3.71%

COMPOSICION FONDO EXTRALEGAL
CALIFICACION EMISORES 31 DE MARZO DE 2008

CALIFICACION	EMISOR	VR. MERCADO	PART.	CALIFIC.	
AAA	ORGANISMOS PUBLICOS				
	GRUPO ISA	386,276,102.00	6.43%	DCR	
	TITULARIZACIONES				
	FIDEICOMISO NOTAS CODA	82,624,802.00	1.38%	BRC	
	COLSANITAS	193,588,554.00	3.22%	DCR	
	PART. INMOBILIARIA REITS	563,560,923.00	9.38%	BRC	
	SECTOR FINANCIERO				
	BANCOLOMBIA	512,317,355.00	8.53%	DCR	
	BANCOLDEX	408,680,572.00	6.81%	DCR	
	BANCO COLPATRIA	127,072,124.00	2.12%	DCR	
	BANCO DE OCCIDENTE	304,699,564.00	5.07%	DCR	
	BBVA	300,356,922.00	5.00%	DCR	
	CITIBANK	537,658,881.00	8.95%	DCR	
	CFC GMAC	254,032,695.00	4.23%	DCR	
	GRUPO AVAL	303,799,338.00	5.06%	DCR	
	LEASING COLOMBIA	202,866,035.00	3.38%	DCR	
	LEASING DE OCCIDENTE	600,433,642.00	10.00%	DCR	
	ENCARGOS FIDUCIARIOS				
	HELM TRUST	205,258,309.00	3.42%	DCR	
	SECTOR REAL -PRIVADO				
	BAVARIA	100,421,596.00	1.67%	DCR	
	METRODISTRITO	386,141,967.00	6.43%	DCR	
	EFFECTIVO				
	BANCO DE CREDITO	535,308,219.00	8.91%	DCR	
		TOTAL	6,005,097,600	100%	

RENTABILIDAD FONDO EXTRALEGAL MARZO/08



Rentabilidad	
Mes de marzo/08:	15.66%
Año corrido/08	15.39%
Seis meses:	14.94%
Un año:	13.56%

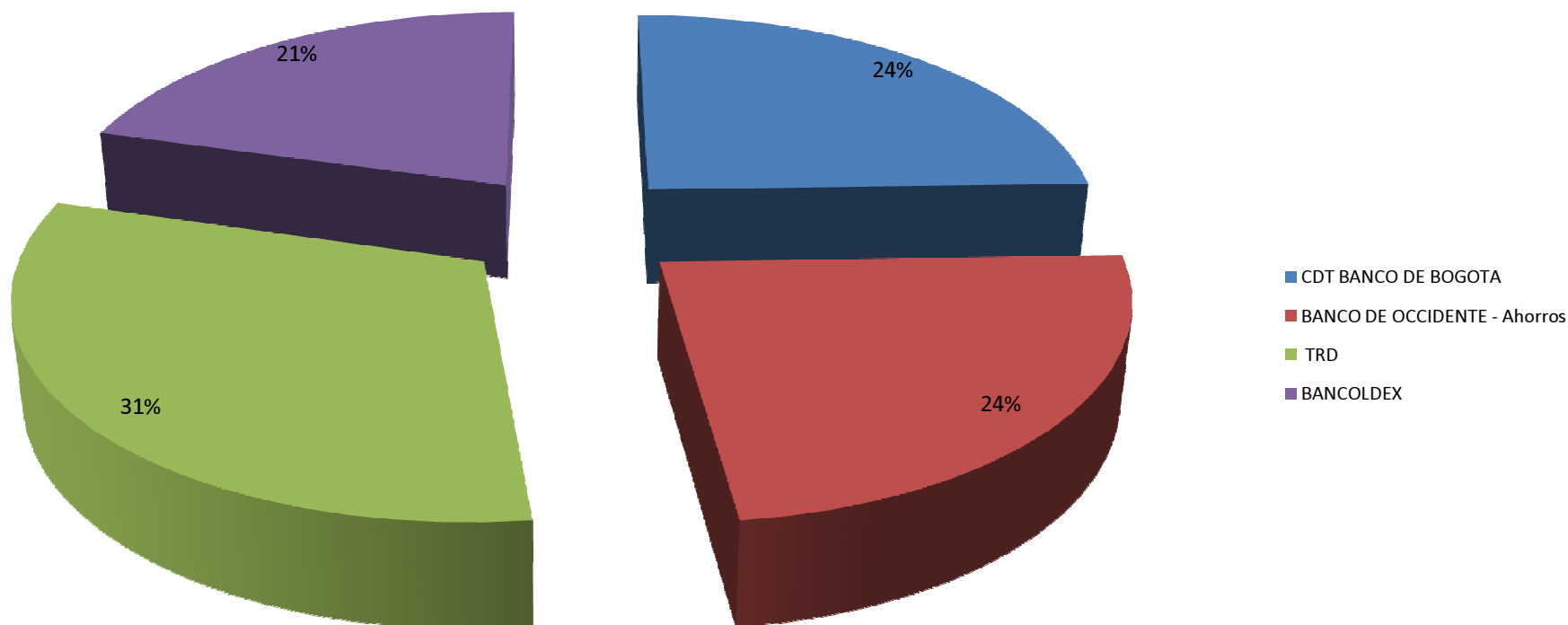
DISTRIBUCION DE CARTERA MARZO/08



DISTRIBUCION CARTERA POR MODALIDAD

MODALIDAD	VALOR \$	PART.
PERSONAL	8,445,398,998	69.25%
VEHÍCULOS	3,703,488,233	30.37%
CALAMIDAD	33,967,599	0.28%
EDUCATIVO	11,882,062	0.10%
TOTAL	12,194,736,892	100.00%

PORTAFOLIO ADMINISTRADORA MARZO 31 DE 2008



Especie	Vr. Mercado	Part.	Calificación
CDT BANCO DE BOGOTA	121,826,851	24.52%	dp1+
BANCO DE OCCIDENTE - Ahorros	117,218,166	23.59%	dp1+
TRD	155,617,134	31.32%	Nación
BANCOLDEX	102,170,143	20.56%	dp1+
Total general	496,832,294	100.00%	